



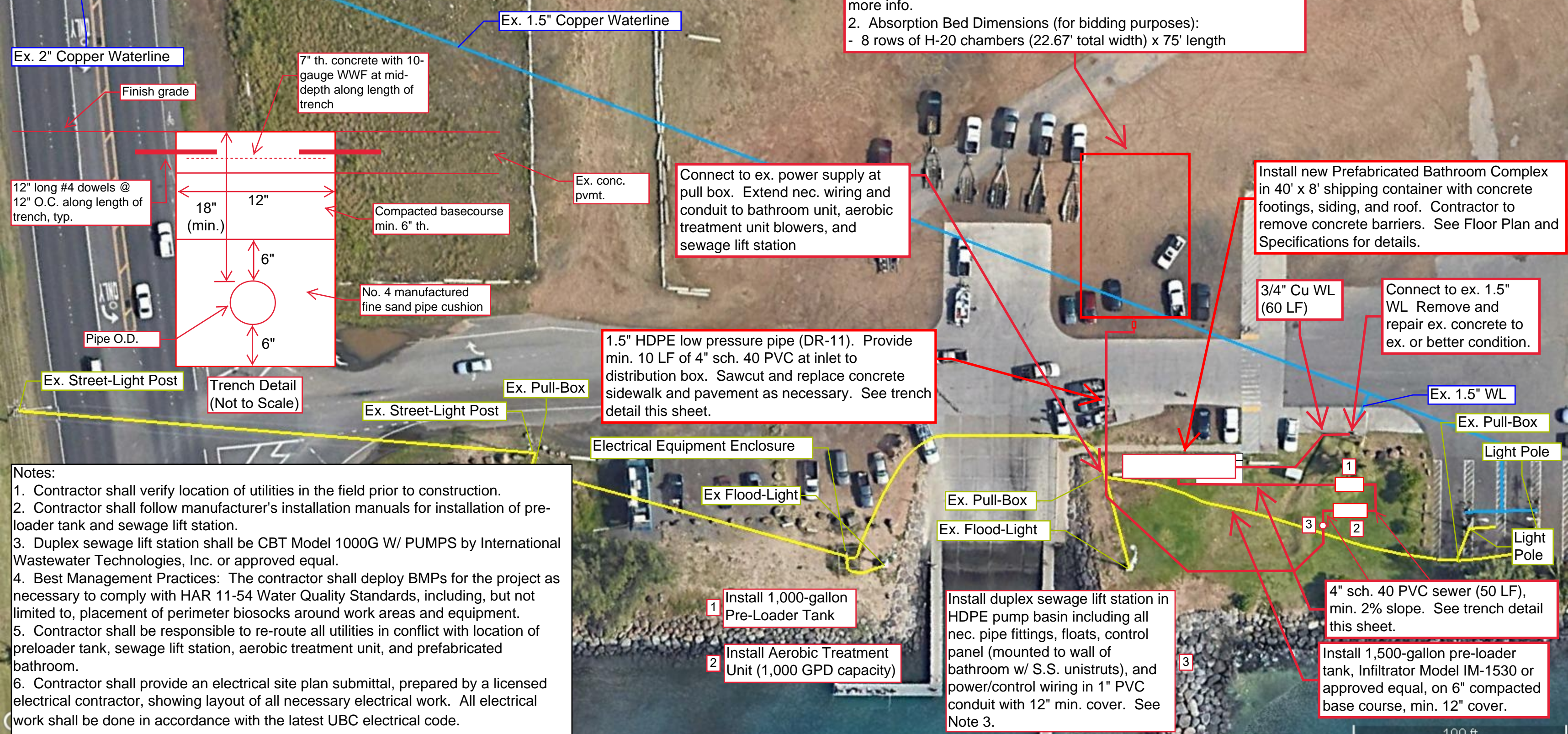
Job No. MA24-03
Kahului SBH Prefabricated Bathroom & Wastewater System
Site Plan (Not to Scale)
REVISED per Addendum No. 4 dated April 11, 2024

Legend

-  Copper Waterline
-  Electrical Line

Wastewater Absorption Bed (1,000 GPD capacity):

1. Install H-20 traffic rated infiltrator chambers or approved equal including additional excavation for installation of geogrid and geotextile fabric 5' beyond perimeter of absorption bed. See manufacturer's recommended traffic-rated absorption bed detail for more info.
2. Absorption Bed Dimensions (for bidding purposes):
 - 8 rows of H-20 chambers (22.67' total width) x 75' length



Ex. 2" Copper Waterline

Ex. 1.5" Copper Waterline

Finish grade

7" th. concrete with 10-gauge WWF at mid-depth along length of trench

12" long #4 dowels @ 12" O.C. along length of trench, typ.

18" (min.)

6"

Compacted basecourse min. 6" th.

No. 4 manufactured fine sand pipe cushion

Pipe O.D.

Trench Detail (Not to Scale)

Ex. Street-Light Post

Ex. Street-Light Post

Ex. Pull-Box

Electrical Equipment Enclosure

Ex Flood-Light

Ex. Pull-Box

Ex. Flood-Light

1 Install 1,000-gallon Pre-Loader Tank

2 Install Aerobic Treatment Unit (1,000 GPD capacity)

Install duplex sewage lift station in HDPE pump basin including all nec. pipe fittings, floats, control panel (mounted to wall of bathroom w/ S.S. unistruts), and power/control wiring in 1" PVC conduit with 12" min. cover. See Note 3.

4" sch. 40 PVC sewer (50 LF), min. 2% slope. See trench detail this sheet.

Install 1,500-gallon pre-loader tank, Infiltrator Model IM-1530 or approved equal, on 6" compacted base course, min. 12" cover.

1.5" HDPE low pressure pipe (DR-11). Provide min. 10 LF of 4" sch. 40 PVC at inlet to distribution box. Sawcut and replace concrete sidewalk and pavement as necessary. See trench detail this sheet.

Connect to ex. power supply at pull box. Extend nec. wiring and conduit to bathroom unit, aerobic treatment unit blowers, and sewage lift station

Install new Prefabricated Bathroom Complex in 40' x 8' shipping container with concrete footings, siding, and roof. Contractor to remove concrete barriers. See Floor Plan and Specifications for details.

3/4" Cu WL (60 LF)

Connect to ex. 1.5" WL Remove and repair ex. concrete to ex. or better condition.

Ex. 1.5" WL

Ex. Pull-Box

Light Pole

Light Pole

100 ft

Notes:

1. Contractor shall verify location of utilities in the field prior to construction.
2. Contractor shall follow manufacturer's installation manuals for installation of pre-loader tank and sewage lift station.
3. Duplex sewage lift station shall be CBT Model 1000G W/ PUMPS by International Wastewater Technologies, Inc. or approved equal.
4. Best Management Practices: The contractor shall deploy BMPs for the project as necessary to comply with HAR 11-54 Water Quality Standards, including, but not limited to, placement of perimeter biosocks around work areas and equipment.
5. Contractor shall be responsible to re-route all utilities in conflict with location of preloader tank, sewage lift station, aerobic treatment unit, and prefabricated bathroom.
6. Contractor shall provide an electrical site plan submittal, prepared by a licensed electrical contractor, showing layout of all necessary electrical work. All electrical work shall be done in accordance with the latest UBC electrical code.